

AVNET EMBEDDED SPECIFICATION.

Datasheet
Citizen
CT-S801

**Fast, easy and reliable
High speed printing with unique ease of use**



CT-S801
(available in black or white)

CT-S801
POS

Applications

- Receipt
- Coupon
- Ticket
- Daily Report
- Kitchen management
- Delivery slip
- Barcode
- Weigh scales
- Kiosk
- Queue management

LCD display

The industry's first POS printer with LCD display for easy configuration and operation. Many set up options and coloured status or error messages.

In a hurry?

With 300mm/sec. print speed the CT-S801 is the fastest POS printer in the market.

Toolfree maintenance

Paper jam? No problem for the CT-S801. One hand grip and the cutter is released automatically. No tool is needed.

Even if the long-life cutter ever needs to be exchanged. Thanks to it's Snap-In design this only takes 30 seconds.

Internal Power Supply

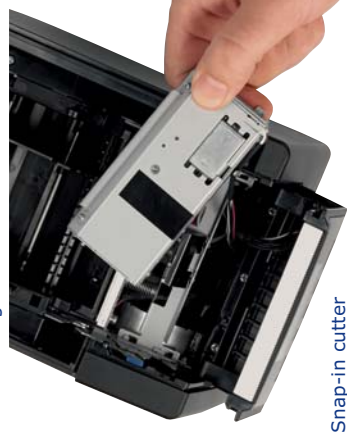
All 80mm POS printers from Citizen offer an internal power supply.



Online status



Error message with instruction



Snap-in cutter

Accessories

Interface Connections

- Serial IF1-RS01
- Parallel IF1-PA01
- USB IF1-UB01
- Powered USB IF1-PU01
- USB incl. USB hub IF1-HU01
- Ethernet (SEH) IF1-ES01
- Ethernet (Standard) IF1-ET01

Specifications

Printing method	Line thermal dot printing
Printing width	80mm/640 dots, 72mm/576 dots, 64mm/512 dots, 54.5mm/436 dots, 54mm/432 dots, 52.5mm/420 dots, 48mm/384 dots, 45mm/360 dots, 48.75mm/390 dots, 68.25mm/546 dots
Dot pitch	8 x 8 dots/mm (203 dpi)
Printing speed	Max. 300mm/s (print density 100%), 2400 dot-lines/s
Number of columns	83mm paper: Font A - 53, Font B - 71, Font C - 80, 80mm paper: Font A - 48, Font B - 64, Font C - 72, 60mm paper: Font A - 36, Font B - 48, Font C - 54, 58mm paper: Font A - 35, Font B - 46, Font C - 52
Character size (WxH)	Font A: 1.50 x 3.00mm (12 x 24 dots), Font B: 1.13 x 2.13mm (9 x 17 dots), Font C: 1.00 x 2.00mm (8 x 16 dots)
Character table	Alphanumeric, international, PC437/850/852/857/858/860/863/864/865/866/WPC1252/katakana/Thai code 18
Barcode type	UPC-A/E, JAN-13/8, Code 39, Code 128, CODABAR, Code 93, PDF417, QR Code
Logo registration/print	384 KB (capable of storing user-defined characters and logos)
Line spacing	4.23mm (1/6 inch), can be set by command
Paper	83mm/80mm/60mm/58mm (all +0/-1mm)
Diameter	maximum 83mm
Thickness	65-75µm (core tube diameter: inner 12mm/outer 18mm)
Recommended Paper	75-150µm (core tube diameter: inner 25.4mm/outer 32mm) TF-50KS-E-2D from Nippon Paper, PD150R or PD160R from Ohji Paper PA220AG, HP220A, HP220AB-1, FZ30AA, P220AB, or PB670 (2-color paper) from Mitsubishi Paper
Interface	Serial (RS-232C compliant), parallel (IEEE 1284 compliant)), USB, USB with hub, Ethernet, powered USB
Input buffer	4K bytes/45 bytes
Drawer kick-out	2 drawers
External device port	RJ-45, 8-pin connector
Liquid crystal display (LCD)	128 x 32 dots STN liquid crystal, white/red LED backlight
Power supply	Input: AC 100 to 240V, 50/60 Hz, 150 VA, Output: DC 24, 2.1 A CT-S801S: Approx. 2 kg, CT-S801A: Approx. 1.6 kg
Weight	CT-S801S: 145 x 192 x 148 mm, CT-S801A: 145 (W) x 192 (D) x 120 (H) mm
Dimensions (W x D x H)	5 to 45°C, 10 to 90% RH (no condensation) -20 to 60°C, 10 to 90% RH (no condensation)
Operating environment	Print head life: 150km, 200 million pulses (at normal temperature and humidity using recommended paper), Auto cutter life: 2 million cuts (at normal temperature/humidity, using recommended paper and paper thickness)
Storage environment	
Reliability	
EMC and safety standards	UL, C-UL, FCC Class A, TUV-Bauart, CE Marking

Type Classification

CT-S801S 3 RS E BK P L M1
1) 2) 3) 4) 5) 6) 7) 8) 9)

1) Model type

CT-S801
DC/No power source
S: Built-in power supply type
A: AC adapter type

2) Power supply

3) Paper width

DC/No power source
S: Built-in power supply type
A: AC adapter type

4) Interface

PA: Parallel
RS: Serial RS-232C
UB: USB only
UH: USB with hub

5) Market:

J: Japanese
E: Europe/Asia
U: North America
C: China

6) Body case color

WH: White
BK: Black
GR: Gray

7) PNE sensor

No
P: PNE sensor

8) Label

No
L: Label type

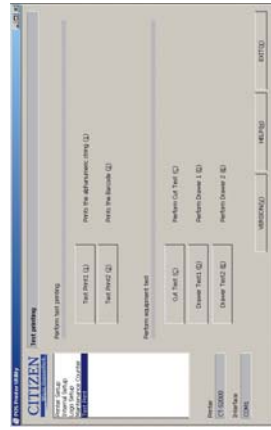
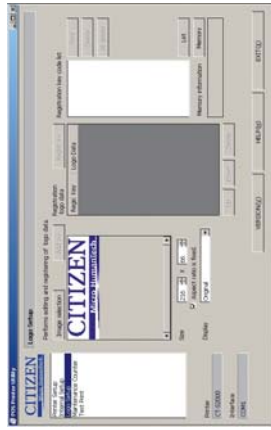
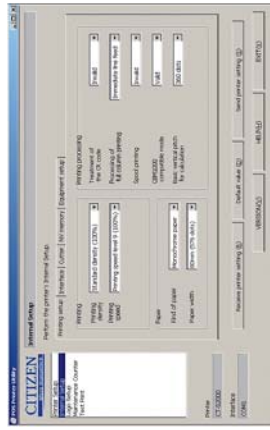
9) Black Mark sensor

No
M1: Left side
M2: Right side

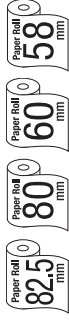


Exchangeable interfaces plus RJ-45 port

Customization Software



Features



- 300mm / sec high-speed printing
- 82.5/80/60/58 mm selectable paper width
- Easy paper loading
- Auto retracting Cutter (full/partial)
- Snap-in cutter
- LCD display
- Built-in buzzer
- Top paper exit
- Paper roll capacity Ø 83mm
- Exchangeable interface cards
- RJ-45 port
- Built-in AC adaptor
- Cash drawer kick-out
- Bitmap registration (NV memory)
- Barcode printing
- ESC/POS compatibility
- Page mode
- Two color printing
- Smoothing fonts
- Available in white, black or dark grey (option)
- Driver: Win2000/XP/Vista/2003 Server, OPOS, Java POS, CUPS
- Utility software: Printer customization software, Receipt Layout Designer

AVNET EMBEDDED OFFICES.

DENMARK

Avnet Embedded
Avnet Nortec A/S
Ellekær 9
2730 Herlev
Phone: +45 3678 6250
Fax: +45 3678 6255
denmark@avnet-embedded.eu

FINLAND

Avnet Embedded
Avnet Nortec Oy
Tiilenpolttajankuja 3 A B
1720 Vantaa
Phone: +358 207 499260
Fax: +358 942 597446
finland@avnet-embedded.eu

FRANCE

Avnet Embedded
Avnet EMG France SA
Immeuble 154, Parc Chene 2
5, allée du General Benoist
69000 Bron
Phone: +33 4 72 81 02 30
Fax: +33 4 72 81 02 34
axess-bron@avnet-embedded.eu

Avnet Embedded
Avnet EMG France SA
4, rue de la Couture
Bâtiment Milan, BP 20209
94518 Rungis Cedex
Phone: +33 1 49 78 88 88
Fax: +33 1 49 78 88 89
axess-rungis@avnet-embedded.eu

Avnet Embedded
Avnet EMG France SA
ZA la Hallerais le Semiramis
2, allée du Communal
35770 Vern sur Seiche
Phone: +33 2 99 77 37 02
Fax: +33 2 99 77 33 38
axess-rennes@avnet-embedded.eu

GERMANY (AUSTRIA, CZECH REPUBLIC, HUNGARY, POLAND, SWITZERLAND)

Avnet Embedded
Avnet EMG GmbH
Gruber Straße 60c
85586 Poing
Phone: +49 8121 775 500
Fax: +49 8121 775 550
poing@avnet-embedded.eu

Avnet Embedded
Avnet EMG GmbH
Lötscher Weg 66
41334 Nettetal
Phone: +49 8121 775 500
Fax: +49 8121 775 550
nettetal@avnet-embedded.eu

ITALY (PORTUGAL, SPAIN)

Avnet Embedded
Avnet EMG Italy SRL
Via Manzoni, 44
20095 Cusano Milanino
Phone: +39 02 66092 1
Fax: +39 02 66092 498
milano@avnet-embedded.eu

NETHERLANDS (BELGIUM, LUXEMBOURG)

Avnet Embedded
Avnet B.V.
Takkebijsters 2
4802 BL Breda
Phone: +31 76 5722400
Fax: +31 76 5722404
benelux@avnet-embedded.eu

SWEDEN (NORWAY)

Avnet Embedded
Avnet Nortec AB
Esplanaden 3 D
172 67 Sundbyberg
Phone: +46 8 564 725 50
Fax: +46 8 760 01 10
sweden@avnet-embedded.eu

UNITED KINGDOM (IRELAND)

Avnet Embedded
Avnet EMG Ltd.
Pilgrims Court, 15/17 West Street
Reigate, Surrey, RH2 9BL
Phone: +44 1737 227800
Fax: +44 1737 243872
uk@avnet-embedded.eu

All trademarks and logos are the property of their respective owners. This document provides a brief overview only and is not intended to be complete or binding offer. Product information, including information related to a product's specifications, uses or conformance with legal or other requirements, is obtained by Avnet from its suppliers or other sources deemed reliable and is provided by Avnet on an „As Is“ basis. Avnet makes no representation as to the accuracy or completeness of the product information and Avnet disclaims all representations, warranties and liabilities under any theory with respect to the product information, including any implied warranties of merchantability, fitness for a particular purpose, title and/or non-refrangement. All product information is subject to change without notice.

LOCAL AVNET EMBEDDED BUSINESSES:

axess
technology

An Avnet Embedded Business

tdc

An Avnet Embedded Business

trident

An Avnet Embedded Business