

AVNET EMBEDDED SPECIFICATION.

Datasheet Toshiba LTA084C271F

All information is subject to change without notice. Please read bottom notes.

- FEATURES:** (1)8.4" SVGA color display with High Brightness (400cd/m²).
 (2)Wide viewing angle and wide operating temperature.
 (3)Built in Long Life LEDs (MTBF:70,000 h).
 (Conditions / Ta:25°C, PWM=100%(continuing lighting))
 (4)Replaceable structure of LED units.
 (5) Mounting compatible with LTM08C351 series and LTA084C270F.

TENTATIVE**RoHS compatible****MECHANICAL SPECIFICATIONS**

| Item | Specifications |
|----------------------------|--|
| Dimensional Outline (Typ.) | 199.5 (W) x 149.5 (H) x 12.0max (D) mm |
| Number of Pixels | 800 (W) x 600 (H) pixels |
| Active Area | 170.4 (W) x 127.8 (H) mm |
| Pixel Pitch | 0.213 (W) x 0.213 (H) |
| Weight (approximately) | 385g |
| Backlight | Sidelight (LEDs) |

ABSOLUTE MAXIMUM RATINGS

| Item | Min. | Max. | Unit | |
|--|---|------|----------------------|-------|
| Supply Voltage | (V _{DD}), (V _{PWM}) | -0.3 | 4.0 | V |
| | (V _{LED}) | 0 | 20 | V |
| Input Signal Voltage | (V _{IN}) | -0.3 | V _{DD} +0.3 | V |
| Operating Temperature | | -20 | 70 | °C |
| Storage Temperature | | -30 | 80 | °C |
| Storage Humidity (Max. wet bulb temp. = 39°C) | | 10 | 90 | %(RH) |

ELECTRICAL SPECIFICATION (Ta=25°C) (RECOMMENDED OPERATION CONDITION)

| Item | Min. | Typ. | Max. | Unit | Remarks | |
|---------------------------------|----------------------------------|------|------|-----------------|---------|----------|
| Supply Voltage | (V _{DD}) | 3.0 | 3.3 | 3.6 | V | |
| | (V _{LED}) | 10.8 | 12.0 | 13.2 | V | |
| Differential Input Voltage | (V _{ID}) | 0.25 | --- | 0.45 | V | |
| Common Mode Input Voltage | (V _{CM}) | 1.0 | 1.25 | 2.0 | V | |
| High Level Input Voltage | (V _{IH}) | 2.2 | --- | V _{DD} | V | REV |
| Low Level Input Voltage | (V _{IL}) | 0 | --- | 0.7 | V | REV |
| Backlight ON/OFF signal | (V _{ON/OFF}) | 2.0 | --- | V _{DD} | V | ON |
| | | 0 | --- | 0.8 | V | OFF |
| Luminance control signal | (V _{PWM}) | 0 | --- | 3.3 | V | |
| Current Consumption | (I _{DD}) ^{*1} | --- | 220 | --- | mA | |
| | (I _{LED}) | --- | 350 | --- | mA | PWM=100% |
| Power Consumption ^{*1} | | --- | 5.0 | --- | W | PWM=100% |

*1 : 8 color bars pattern

OPTICAL SPECIFICATION (Ta=25°C)

| Item | Min. | Typ. | Max. | Unit | Remarks |
|--|---------------------|------|--------|------|----------------------------|
| Contrast Ratio | (CR) | 250 | 370 | --- | --- |
| Viewing Angle (CR ≥ 10) | (Upper+Lower) | --- | 100 | --- | ° |
| | (Left+Right) | --- | 120 | --- | ° |
| Response Time | (t _{ON}) | --- | 8 | --- | ms |
| | (t _{OFF}) | --- | 17 | --- | ms |
| Luminance | (L) | 280 | 400 | --- | cd/m ² PWM=100% |
| Lamp Life Time (MTBF) ^{*2 *3} | | | 70,000 | | h PWM=100% |

*2 : Conditions ; Ta=25°C, continuous lighting

*3 : Definitions of failure ; 1) Lcd luminance becomes half of the minimum value. 2) LED doesn't light normally.

*The information contained herein is presented only as a guide for the applications of our products. No responsibility is assumed by Toshiba Mobile Display Co., Ltd or other rights of the third parties which may result from its use. No license is granted by implication or otherwise under any patent or patent rights of Toshiba Mobile Display Co., Ltd or others.

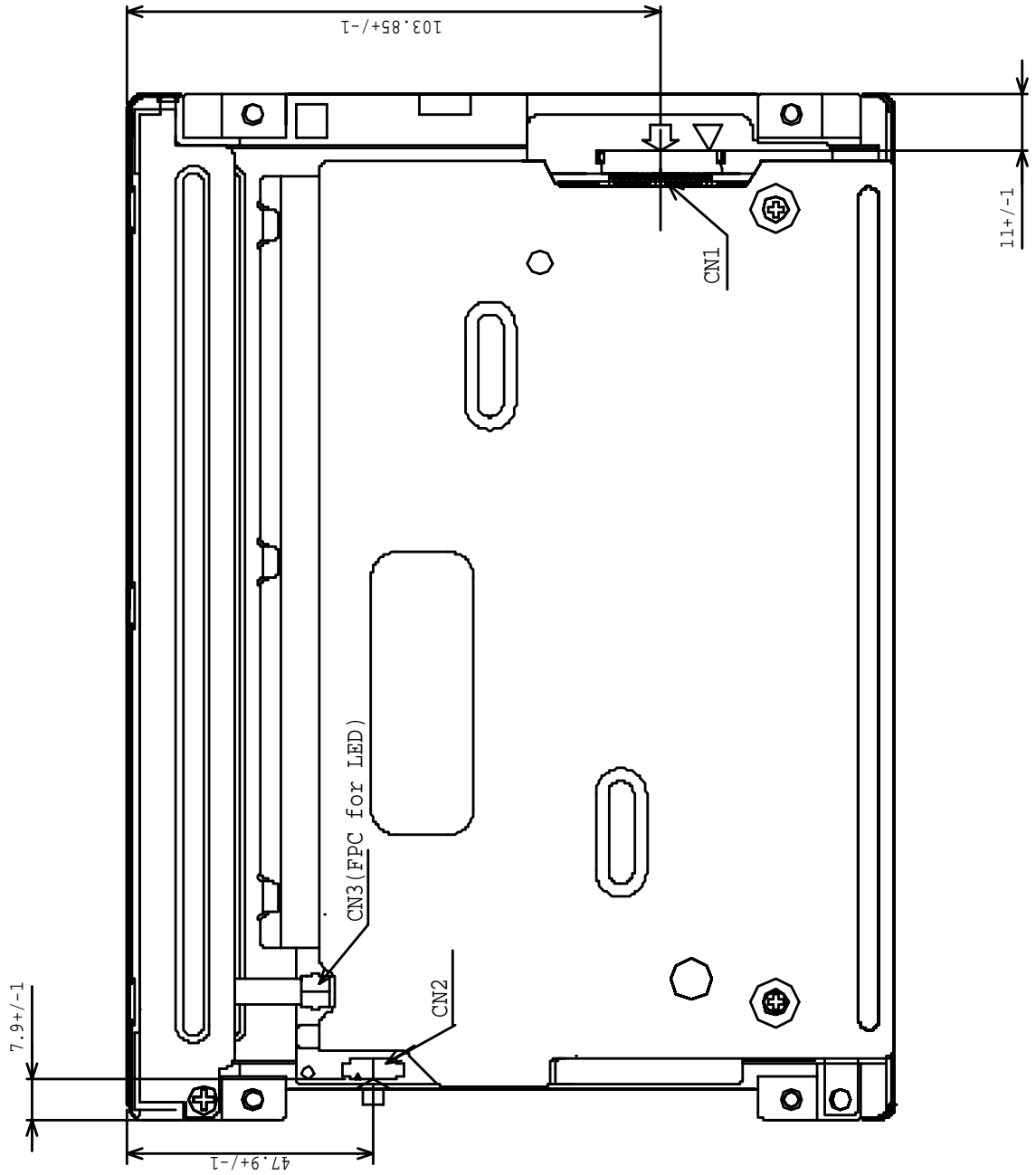
*The information contained herein may be changed without prior notice. It is therefore advisable to contact Toshiba Mobile Display Co., Ltd before proceeding with the design of equipment incorporating this product.

<Rear side>

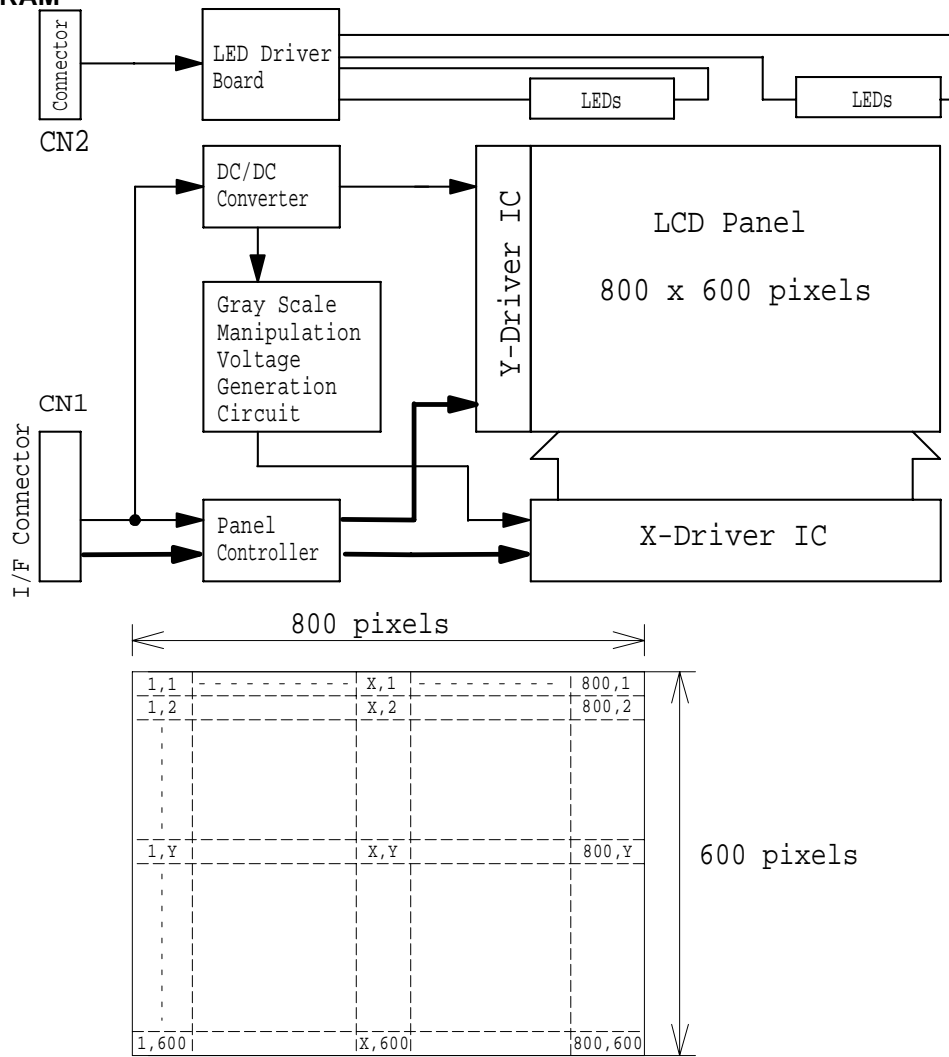
TENTATIVE

Unit : mm

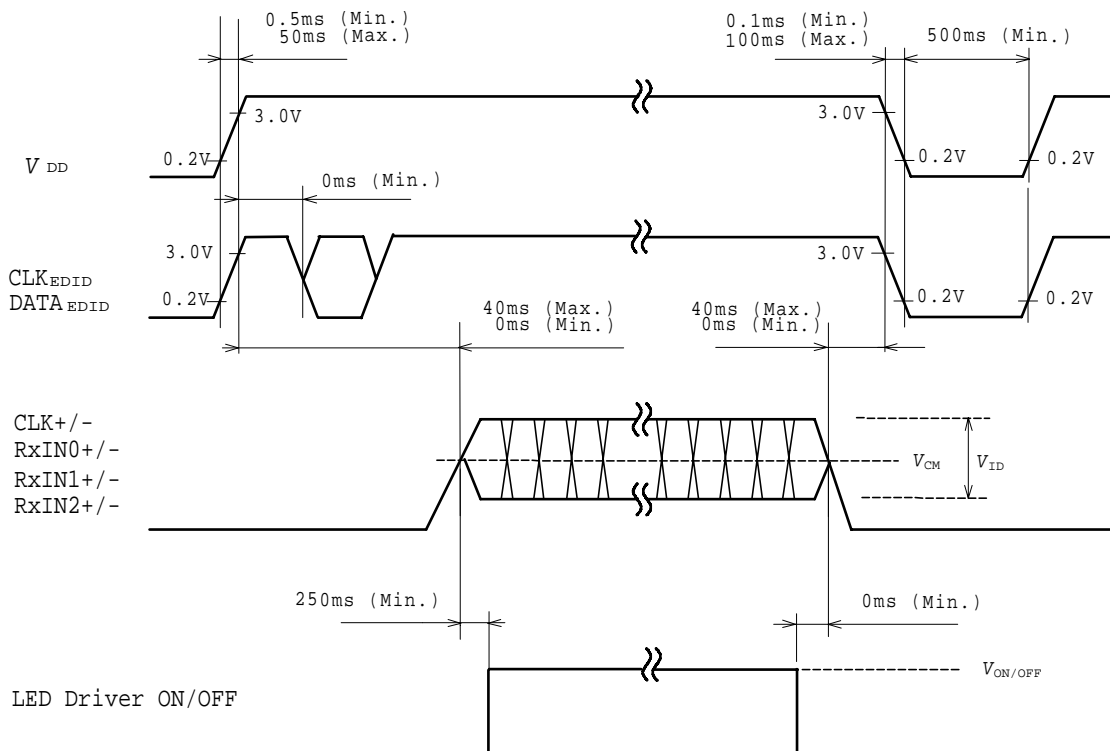
Standard tolerance : +/-0.5



BLOCK DIAGRAM



SEQUENCE OF POWER SUPPLIES AND SIGNALS



Note 1) When turn V_{DD} on and turn it off, the form of voltage should be input with no ripple signal.

Note 2) Refer to E²PROM(S-24CS01A) specifications by Seiko Instruments Inc. for EDID.

TIMING SPECIFICATION *1 *2 *3 *4 *5 *6

| Item | Symbol | Min. | Typ. | Max. | Unit | Remarks |
|-------------------------|--------|---------------------|----------------------|----------------------|------|---------------|
| Frame Period | t_1 | 604 x t_3 | 628 x t_3 16.58 | 677 x t_3 17.86 | --- | |
| Vertical Display Term | t_2 | 600 x t_3 | 600 x t_3 | 600 x t_3 | --- | |
| One Line Scanning Time | t_3 | 944 x t_5 26.3 | 1056 x t_5 26.4 | 1064 x t_5 --- | --- | μs |
| Horizontal Display Term | t_4 | 800 x t_5 | 800 x t_5 | 800 x t_5 | --- | |
| Clock Period | t_5 | 24.7 | 25.0 | 27.8 | ns | |

Note 1) Refer to "TIMING CHART" and LVDS (THC63LVDF84A) specifications by THine Electronics, Inc.

Note 2) If ENAB is fixed to "H" or "L" level for certain period while NCLK is supplied, the panel displays black with some flicker.

Note 3) Don't fix NCLK to "H" or "L" level while the VDD is supplied.

If NCLK is fixed to "H" or "L" level for certain period while ENAB is supplied, the panel may be damaged.

When it holds on, DC voltage supplies to liquid crystal materials and it may cause damage to liquid crystal materials.

Note 4) Please adjust LCD operating signal timing and LED PWM frequency, to optimize the display quality.

There is a possibility that flicker is observed by the interference of LCD operating signal timing and PWM condition (especially driving frequency), even if the condition satisfies above timing specifications and recommended operating conditions shown on page 1.

Note 5) Do not make t_1 , t_2 and t_3 fluctuate.

If t_1 , t_2 and t_3 are fluctuate, the panel displays black.

Note 6) Keep constant the number of clock within one line scanning time and the number of scanning line within one frame period.

CONNECTOR PIN ASSIGNMENT FOR INTERFACE

CN1 INPUT SIGNAL

Connector : 20268-020E-03F / I-PEX CO., LTD.

Mating Connector : 20230-020B-F or 20230-T20-F or 20230-W20B-F / I-PEX CO.,LTD.

DF19G-20S-1C(Plug), DF19A-2830SCFA(Crimp contact) / HIROSE ELECTRIC CO., LTD.

| Terminal No. | Symbol | Function |
|--------------|----------------------|--|
| 1 | V _{DD} | +3.3V POWER SUPPLY |
| 2 | V _{DD} | +3.3V POWER SUPPLY |
| 3 | GND* ¹ | |
| 4 | GND* ¹ | |
| 5 | RxIN0- | Negative LVDS differential data input (R0-R5, G0) * ³ |
| 6 | RxIN0+ | Positive LVDS differential data input (R0-R5, G0) * ³ |
| 7 | GND* ¹ | |
| 8 | RxIN1- | Negative LVDS differential data input (G1-G5, B0-B1) * ³ |
| 9 | RxIN1+ | Positive LVDS differential data input (G1-G5, B0-B1) * ³ |
| 10 | GND* ¹ | |
| 11 | RxIN2- | Negative LVDS differential data input (B2-B5, NC, NC, DE) * ³ |
| 12 | RxIN2+ | Positive LVDS differential data input (B2-B5, NC, NC, DE) * ³ |
| 13 | GND* ¹ | |
| 14 | CLK- | Clock Signal (-) |
| 15 | CLK+ | Clock Signal (+) |
| 16 | CLK _{EDID} | DDC clock |
| 17 | REV | Display Reverse("L" level or Open : Normal, "H" level : Reverse) |
| 18 | NC* ² | Non Connection (open) |
| 19 | NC* ² | Non Connection (open) |
| 20 | DATA _{EDID} | DDC data |

Note 1) Please connect GND pin to ground. Don't use it as no-connect nor connection with high impedance.

Note 2) Please connect NC pin to nothing. Don't connect it to ground nor to other signal input.

Note 3) Refer to next page.

CN2 LED INPUT SIGNAL

Connector : 53261-0671 / MOLEX Inc.

Mating Connector : 51021-0600 / MOLEX Inc.

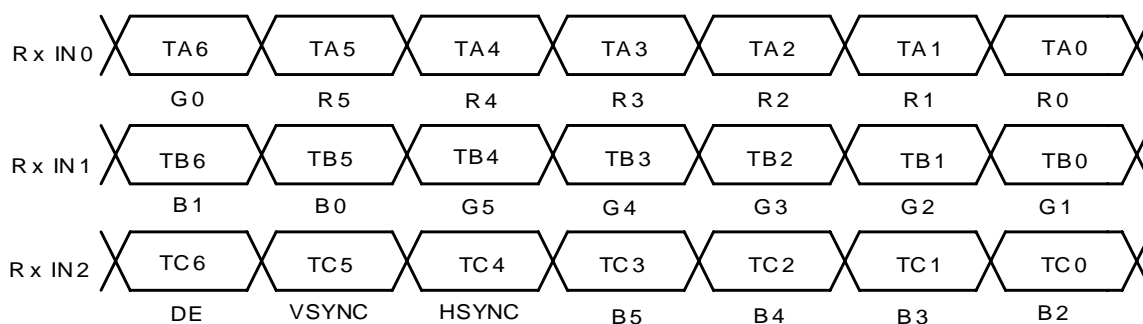
| Terminal No. | Symbol | Function |
|--------------|--------|-------------------------------------|
| 1 | VLED | Power Supply : +12V |
| 2 | VLED | Power Supply : +12V |
| 3 | VSS | GND |
| 4 | VSS | GND |
| 5 | ON/OFF | "H(+3.3V)":ON, "L(GND or Open)":OFF |
| 6 | PWM | 1-100%(200Hz) |

**RECOMMENDED TRANSMITTER (THC63LVDF63A, THC63LVDM63A by Thine Electronics, Inc.)
TO LTA084C271F INTERFACE ASSIGNMENT**

Case1: 6bit Transmitter

| THC63LVDF63A, THC63LVDM63A | | | | LTA084C271F Interface (CN1) | | |
|----------------------------|----------|--|---------------------------------|-----------------------------|-----------------------------|------------------|
| Input Terminal No. | | Input Signal (Graphics controller output signal) | | Output Signal Symbol | LTA084C271F Interface (CN1) | |
| Symbol | Terminal | Symbol | Function | | Terminal | Symbol |
| TA0 | 44 | R0 | Red Pixels Display Data (LSB) | TA- TA+ | No.5 No.6 | RxIN0- RxIN0+ |
| TA1 | 45 | R1 | Red Pixels Display Data | | | |
| TA2 | 47 | R2 | Red Pixels Display Data | | | |
| TA3 | 48 | R3 | Red Pixels Display Data | | | |
| TA4 | 1 | R4 | Red Pixels Display Data | | | |
| TA5 | 3 | R5 | Red Pixels Display Data (MSB) | | | |
| TA6 | 4 | G0 | Green Pixels Display Data (LSB) | | | |
| TB0 | 6 | G1 | Green Pixels Display Data | TB- TB+ | No.8 No.9 | RxIN1- RxIN1+ |
| TB1 | 7 | G2 | Green Pixels Display Data | | | |
| TB2 | 9 | G3 | Green Pixels Display Data | | | |
| TB3 | 10 | G4 | Green Pixels Display Data | | | |
| TB4 | 12 | G5 | Green Pixels Display Data (MSB) | | | |
| TB5 | 13 | B0 | Blue Pixels Display Data (LSB) | | | |
| TB6 | 15 | B1 | Blue Pixels Display Data | | | |
| TC0 | 16 | B2 | Blue Pixels Display Data | TC- TC+ | No.11 No.12 | RxIN2- RxIN2+ |
| TC1 | 18 | B3 | Blue Pixels Display Data | | | |
| TC2 | 19 | B4 | Blue Pixels Display Data | | | |
| TC3 | 20 | B5 | Blue Pixels Display Data (MSB) | | | |
| TC4 | 22 | HSYNC | H-Sync | | | |
| TC5 | 23 | VSYNC | V-Sync | | | |
| TC6 | 25 | DE | Compound Synchronization Signal | | | |
| CLK IN | 26 | NCLK | Data Sampling Clock | TCLK- TCLK+ | No.14 No.15 | CLK- CLK+ |

Note 1) Please connect NC pin to nothing. Don't connect it to ground nor to other signal input.

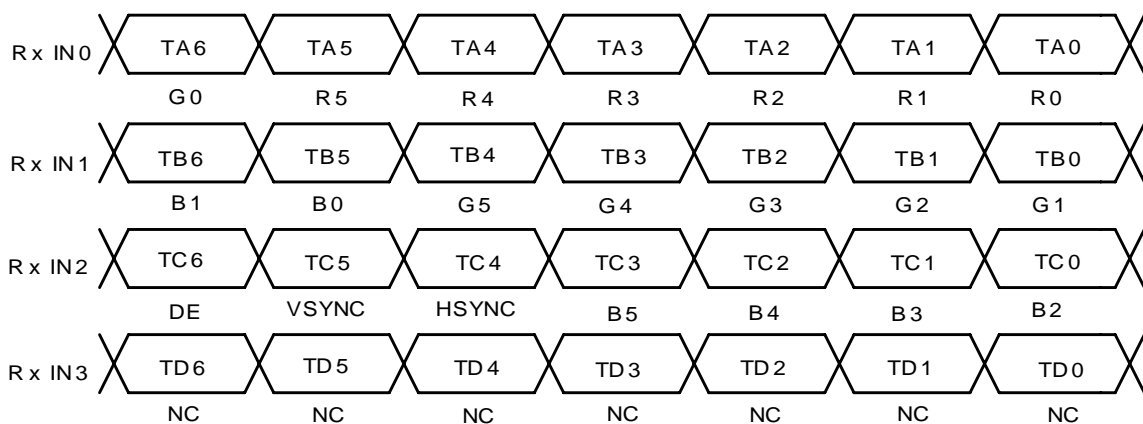


**RECOMMENDED TRANSMITTER (THC63LVDM83D, THC63LVDM83R by THine Electronics, Inc.)
TO LTA084C271F INTERFACE ASSIGNMENT**

Case2: 8bit Transmitter

| THC63LVDM83D, THC63LVDM83R | | | | LTA084C271F Interface (CN1) | | |
|----------------------------|----------|--|---------------------------------|-----------------------------|----------------|------------------|
| Input Terminal No. | | Input Signal (Graphics controller output signal) | | Output Signal Symbol | Terminal | Symbol |
| Symbol | Terminal | Symbol | Function | | | |
| TA0 | 51 | R0 | Red Pixels Display Data (LSB) | TA- TA+ | No.5 No.6 | RxIN0- RxIN0+ |
| TA1 | 52 | R1 | Red Pixels Display Data | | | |
| TA2 | 54 | R2 | Red Pixels Display Data | | | |
| TA3 | 55 | R3 | Red Pixels Display Data | | | |
| TA4 | 56 | R4 | Red Pixels Display Data | | | |
| TA5 | 3 | R5 | Red Pixels Display Data (MSB) | | | |
| TA6 | 4 | G0 | Green Pixels Display Data (LSB) | | | |
| TB0 | 6 | G1 | Green Pixels Display Data | TB- TB+ | No.8 No.9 | RxIN1- RxIN1+ |
| TB1 | 7 | G2 | Green Pixels Display Data | | | |
| TB2 | 11 | G3 | Green Pixels Display Data | | | |
| TB3 | 12 | G4 | Green Pixels Display Data | | | |
| TB4 | 14 | G5 | Green Pixels Display Data (MSB) | | | |
| TB5 | 15 | B0 | Blue Pixels Display Data (LSB) | | | |
| TB6 | 19 | B1 | Blue Pixels Display Data | | | |
| TC0 | 20 | B2 | Blue Pixels Display Data | TC- TC+ | No.11 No.12 | RxIN2- RxIN2+ |
| TC1 | 22 | B3 | Blue Pixels Display Data | | | |
| TC2 | 23 | B4 | Blue Pixels Display Data | | | |
| TC3 | 24 | B5 | Blue Pixels Display Data (MSB) | | | |
| TC4 | 27 | HSYNC | H-Sync | | | |
| TC5 | 28 | VSYNC | V-Sync | | | |
| TC6 | 30 | DE | Compound Synchronization Signal | | | |
| TD0 | 50 | NC ^{*1} | Non Connection (open) | TD- TD+ | | |
| TD1 | 2 | NC ^{*1} | Non Connection (open) | | | |
| TD2 | 8 | NC ^{*1} | Non Connection (open) | | | |
| TD3 | 10 | NC ^{*1} | Non Connection (open) | | | |
| TD4 | 16 | NC ^{*1} | Non Connection (open) | | | |
| TD5 | 18 | NC ^{*1} | Non Connection (open) | | | |
| TD6 | 25 | NC ^{*1} | Non Connection (open) | | | |
| CLK IN | 31 | NCLK | Data Sampling Clock | TCLK- TCLK+ | No.14 No.15 | CLK- CLK+ |

Note 1) Please connect NC pin to nothing. Don't connect it to ground nor to other signal input.



256k (k=1024) COLORS COMBINATION TABLE

| | Display | R5 R4 R3 R2 R1 R0 | G5 G4 G3 G2 G1 G0 | B5 B4 B3 B2 B1 B0 | Gray Scale Level |
|-------------------------|-----------------------------|-------------------|-------------------|-------------------|------------------|
| Basic Color | Black | L L L L L L L | L L L L L L L | L L L L L L L | --- |
| | Blue | L L L L L L L | L L L L L L L | H H H H H H H | --- |
| | Green | L L L L L L L | H H H H H H H | L L L L L L L | --- |
| | Light Blue | L L L L L L L | H H H H H H H | H H H H H H H | --- |
| | Red | H H H H H H H | L L L L L L L | L L L L L L L | --- |
| | Purple | H H H H H H H | L L L L L L L | H H H H H H H | --- |
| | Yellow | H H H H H H H | H H H H H H H | L L L L L L L | --- |
| | White | H H H H H H H | H H H H H H H | H H H H H H H | --- |
| Gray Scale of Red | Black | L L L L L L L | L L L L L L L | L L L L L L L | L 0 |
| | Dark ↑ ↓ Light | L L L L L H L | L L L L L L L | L L L L L L L | L 1 |
| | | L L L L L L L | L L L L L L L | L L L L L L L | L 2 |
| | | : : : | : : : | : : : | L3... L60 |
| | | H H H H L L H | L L L L L L L | L L L L L L L | L61 |
| | H H H H H L L | L L L L L L L | L L L L L L L | L62 | |
| | Red | H H H H H H H | L L L L L L L | L L L L L L L | Red L63 |
| | Gray Scale of Green | Black | L L L L L L L | L L L L L L L | L L L L L L L |
| Dark ↑ ↓ Light | | L L L L L L L | L L L L L H L | L L L L L L L | L 1 |
| | | L L L L L L L | L L L L L L L | L L L L L L L | L 2 |
| | | : : : | : : : | : : : | L3... L60 |
| | | L L L L L L L | H H H H L L H | L L L L L L L | L61 |
| L L L L L L L | | H H H H H L L | L L L L L L L | L62 | |
| Green | | L L L L L L L | H H H H H H H | L L L L L L L | Green L63 |
| Gray Scale of Blue | | Black | L L L L L L L | L L L L L L L | L L L L L L L |
| | Dark ↑ ↓ Light | L L L L L L L | L L L L L L L | L L L L L H L | L 1 |
| | | L L L L L L L | L L L L L L L | L L L L L L L | L 2 |
| | | : : : | : : : | : : : | L3... L60 |
| | | L L L L L L L | L L L L L L L | H H H H L L H | L61 |
| | L L L L L L L | L L L L L L L | H H H H H L L | L62 | |
| | Blue | L L L L L L L | L L L L L L L | H H H H H H H | Blue L63 |
| | Gray Scale of White & Black | Black | L L L L L L L | L L L L L L L | L L L L L L L |
| Dark ↑ ↓ Light | | L L L L L H L | L L L L L H L | L L L L L H L | L 1 |
| | | L L L L L L L | L L L L L H L | L L L L L H L | L 2 |
| | | : : : | : : : | : : : | L3... L60 |
| | | H H H H L L H | H H H H L L H | H H H H L L H | L61 |
| H H H H H L L | | H H H H H L L | H H H H H L L | L62 | |
| White | | H H H H H H H | H H H H H H H | H H H H H H H | White L63 |

**FOR SAFETY**

LCD module is generally designed with precise parts to achieve light weighted thin mechanical dimensions. In using our Modules, make certain that you fully understand and put into practice the warnings and safety precautions detailed in Engineering Information No.EE-N001,"CAUTIONS AND INSTRUCTIONS FOR TOSHIBA LCD MODULES". Refer to individual specifications and TECHNICAL DATA sheets (hereinafter called "TD") for more detailed technical information.

1) SPECIAL PURPOSES

A) Toshiba Mobile Display Co., Ltd 's Standard LCD Modules have not been customized for operation in extreme environments or for use in applications where performance failures could be life-threatening or otherwise catastrophic.

B) Since Toshiba Mobile Display Co., Ltd 's Standard LCD Modules have not been designed for operation in extreme environments, they must never be used in devices that will be exposed to abnormally high levels of vibration or shock which exceed Toshiba Mobile Display Co., Ltd 's published specification limits.

C) In addition, since Toshiba Mobile Display Co., Ltd Standard LCD Modules have not been designed for use in applications where performance failures could be life-threatening or catastrophic, they must never be installed in aircraft navigation control systems (such as, but not limited to Traffic Collision Avoidance System and Air Traffic Indicator), in military defense or weapons systems, in critical industrial process-control systems (e.g., those involved in the production of nuclear energy), or in critical medical device or patient life-support systems.

2) DISASSEMBLING OR MODIFICATION

DO NOT DISASSEMBLE OR MODIFY the module. It may damage sensitive parts inside LCD module, and may cause scratches or dust on the display.

Toshiba Mobile Display Co., Ltd does not warrant the module, if customer disassembled or modified it.

3) BREAKAGE OF LCD PANEL

DO NOT INGEST liquid crystal material, DO NOT INHALE this material, and DO NOT CONTACT the material with skin, if LCD panel is broken and liquid crystal material spills out.

If liquid crystal material comes into mouth or eyes, rinse mouth or eyes out with water immediately.

If this material contact with skin or cloths, wash it off immediately with alcohol and rinse thoroughly with water.

4) GLASS OF LCD PANEL

BE CAREFUL WITH CHIPS OF GLASS that may cause injuring fingers or skin, when the glass is broken.

5) ELECTRIC SHOCK

DISCONNECT POWER SUPPLY before handling LCD module.

DO NOT TOUCH the parts inside LCD module and the fluorescent lamp's connector or cables in order to prevent electric shock, because high voltage is supplied to these parts from the inverter unit while power supply is turned on.

6) ABSOLUTE MAXIMUM RATINGS AND POWER PROTECTION CIRCUIT

DO NOT EXCEED the absolute maximum rating values under the worst probable conditions caused by the supply voltage variation, input voltage variation, variation in parts' constants, environmental temperature, etc., otherwise LCD module may be damaged.

Employ protection circuit for power supply, whenever the specification or TD specifies it.

Suitable protection circuit should be applied for each system design.

7) RECOMMENDED OPERATION CONDITIONS

The performance and quality of the LCD panel are warranted only when the LCD panel is used within "the recommended operation conditions". Toshiba Mobile Display Co., Ltd. never warrants the performance and quality of the LCD panel when you use the LCD panel over "the recommended operation conditions", although within "the absolute maximum rating".

To use the LCD panel over "the recommended operation conditions" may have bad influence on the characteristics and reliability of the LCD panel and may shorten the life of the LCD panel.

Therefore, when designing the whole set, not to be over "the recommended operation conditions", you should fully take care of supply voltage change, characteristic of connection parts, surge of input-and-output line, and surrounding temperature.

8) DISPOSAL

When dispose LCD module, obey to the applicable environmental regulations.

AVNET EMBEDDED OFFICES.

DENMARK

Trident
Avnet Nortec A/S
Banemarksvej 50B, 1
2605 Broendby
Phone: +45 3678 6250
Fax: +45 3678 6255
trident-denmark@avnet-embedded.eu

FINLAND

Trident
Avnet Nortec Oy
Tiilenpolttajankuja 3 A B
1720 Vantaa
Phone: +358 207 499260
Fax: +358 942 597446
trident-finland@avnet-embedded.eu

FRANCE

Axess Technology
Avnet EMG France SA
Immeuble 154, Parc Chene 2
5, allée du General Benoist
69000 Bron
Phone: +33 4 72 81 02 30
Fax: +33 4 72 81 02 34
axess-bron@avnet-embedded.eu

Axess Technology
Avnet EMG France SA
4, rue de la Couture
Bâtiment Milan, BP 20209
94518 Rungis Cedex
Phone: +33 1 49 78 88 88
Fax: +33 1 49 78 88 89
axess-rungis@avnet-embedded.eu

Axess Technology
Avnet EMG France SA
ZA la Hallerais le Semiramis
35770 Vern sur Seiche
Phone: +33 2 99 77 37 02
Fax: +33 2 99 77 33 38
axess-rennes@avnet-embedded.eu

GERMANY (AUSTRIA, CZECH REPUBLIC, HUNGARY, POLAND, SWITZERLAND)

Avnet Embedded
Avnet EMG GmbH
Gruber Straße 60c
85586 Poing
Phone: +49 8121 775 500
Fax: +49 8121 775 550
poing@avnet-embedded.eu

Avnet Embedded
Avnet EMG GmbH
Lötscher Weg 66
41334 Nettetal
Phone: +49 8121 775 500
Fax: +49 8121 775 550
nettetal@avnet-embedded.eu

ITALY

Avnet Embedded
Avnet EMG Italy SRL
Via Manzoni, 44
20095 Cusano Milanino
Phone: +39 02 66092 1
Fax: +39 02 66092 498
milano@avnet-embedded.eu

NETHERLANDS (BELGIUM, LUXEMBOURG)

Avnet Embedded
Avnet B.V.
Takkebijsters 2
4802 BL Breda
Phone: +31 76 5722400
Fax: +31 76 5722404
benelux@avnet-embedded.eu

SPAIN

Avnet Embedded
Avnet Iberia SA
C/Chile, 10 - Edificio Madrid 92
28290 Las Matas (Madrid)
Phone: +34 91 372 7142
Fax: +34 91 636 9788
madrid@avnet-embedded.eu

SWEDEN (NORWAY)

Trident
Avnet Nortec AB
Esplanaden 3 D
172 67 Sundbyberg
Phone: +46 8 564 725 50
Fax: +46 8 760 01 10
trident-sweden@avnet-embedded.eu

UNITED KINGDOM (IRELAND)

TDC
Avnet EMG Ltd.
Pilgrims Court, 15/17 West Street
Reigate, Surrey, RH2 9BL
Phone: +44 1737 227888
Fax: +44 1737 243872
tdc@avnet-embedded.eu

Trident
Avnet EMG Ltd.
Pilgrims Court, 15/17 West Street
Reigate, Surrey, RH2 9BL
Phone: +44 1737 227800
Fax: +44 1737 244698
trident-uk@avnet-embedded.eu

All trademarks and logos are the property of their respective owners. This document provides a brief overview only and is not intended to be complete or binding offer. Product information, including information related to a product's specifications, uses or conformance with legal or other requirements, is obtained by Avnet from its suppliers or other sources deemed reliable and is provided by Avnet on an „As Is“ basis. Avnet makes no representation as to the accuracy or completeness of the product information and Avnet disclaims all representations, warranties and liabilities under any theory with respect to the product information, including any implied warranties of merchantability, fitness for a particular purpose, title and/or non-refrangement. All product information is subject to change without notice.

LOCAL AVNET EMBEDDED BUSINESSES:

axess
technology

An Avnet Embedded Business

tdc

An Avnet Embedded Business

trident

An Avnet Embedded Business